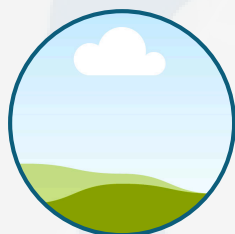


2ND INTERNATIONAL CONFERENCE ON CARDIOLOGY AND CARDIOVASCULAR MEDICINE

July 16-17, 2025 | Rome, Italy



Chen Hong

ABC

Diagnostic value of combined detection of serum lipoprotein a and BNP in patients with heart failure

Objective

To explore the diagnostic value of combined detection of serum lipoprotein a [Lp(a)] and brain natriuretic peptide (BNP) in patients with heart failure.

Methods

A total of 100 patients with heart failure admitted to our hospital from January 2021 to January 2024 were retrospectively selected as the study group, and another 100 healthy volunteers who underwent physical examinations in our hospital during the same period were selected as the control group. The levels of Lp(a) and BNP in the two groups were analyzed. The receiver operating characteristic curve (ROC) was drawn to analyze the diagnostic value of combined detection of serum lipoprotein a and BNP in patients with heart failure.

Results

The levels of Lp(a) and BNP in the observation group were both higher than those in the control group ($P < 0.05$); the AUC value of combined detection of serum lipoprotein a and BNP was higher than that of single detection ($Z = 16.253, 12.875, 5.941, P < 0.05$).

Conclusion

The combined detection of Lp(a) and BNP has good diagnostic efficacy for patients with heart failure and is worthy of clinical promotion.

Keywords: serum lipoprotein a; brain natriuretic peptide; heart failure; diagnosis.

TABLE AND FIGURE

Biography